



Coming up at Ryerson Woods

Ryerson Woods Summer Sights

At Brushwood

Saturday, July 26

Opening Reception: Pride of Place

At Brushwood

6 - 8pm

Group exhibition of evocative landscape paintings by members of the Midwest Paint Group. by members of the **Midwest Paint Group.**

Exhibition to run July 26 – August 17

Midwest Paint Group artists:

- Bob Brock**
- Glen Cebulash**
- Philip Hale**
- Timothy King**
- Barbara Lea**
- Jeremy Long**
- Ron Weaver**
- Megan Williamson**

Guest artists:

- Lynette Lombard**
- Charlotte Rollman,**

8:00 - 11:00 pm

Wild & Scenic Environmental Film Festival and the Midwest Paint Group Exhibition.

Friends of Ryerson Woods will host an exciting array of ten inspiring short films from The Wild and Scenic Film Festival, the largest festival of its kind in the U.S. Film topics range from a humorous look at the \$40 billion lawn industry, to the life cycle of a paper cup, to a chronicle of two kayakers' trek from Alaska to Argentina in a truck that doesn't use one drop of petroleum. Picnic on the lawn and enjoy the movies under the starry Ryerson Woods sky.



Film Festival Tickets \$15 (\$10 FRW members).
 Children 12 and under, \$5.
 Register online
 or call 847-968-3321.

At Brushwood
 21850 N Riverwoods Road.
 Deerfield IL 60015

Ryerson Conservation Area is located in southeast Lake County near Deerfield. The entrance and parking area are located on Riverwoods Road between Half Day Road (Route 22) and Deerfield Road, just west of the Interstate 94 Tollway.

Midwest Paint Group artists:



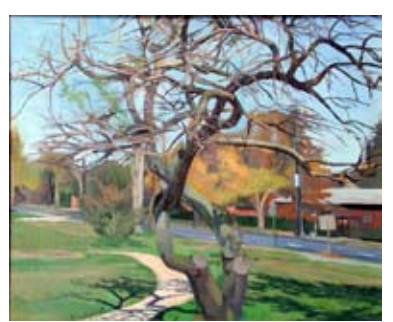
Bob Brock



Barbara Lea



Glen Cebulash



Jeremy Long



Philip Hale



Ron Weaver



Timothy King



Megan Williamson

Guest artists:



Lynette lombard



Charlotte Rollman